

January

Sunday	Monday	Tuesday	Wednesday	Thursday	Friday	Saturday
					1	2
3	4	5	6	7	8	9
10	11	12	13	14	15	16
17	18	19	20	21	22	23
24	25	26	27	28	29	30
31						

February

Sunday	Monday	Tuesday	Wednesday	Thursday	Friday	Saturday
	1	2	3	4	5	6
7	8	9	10	11	12	13
14	15	16	17	18	19	20
21	22	23	24	25	26	27
28						

March

Sunday	Monday	Tuesday	Wednesday	Thursday	Friday	Saturday
	1	2	3	4	5	6
7	8	9	10	11	12	13
14	15	16	17	18	19	20
21	22	23	24	25	26	27
28	29	30	31			

April

Sunday	Monday	Tuesday	Wednesday	Thursday	Friday	Saturday
				1	2	3
4	5	6	7	8	9	10
11	12	13	14	15	16	17
18	19	20	21	22	23	24
25	26	27	28	29	30	

May

Sunday	Monday	Tuesday	Wednesday	Thursday	Friday	Saturday
						1
2	3	4	5	6	7	8
9	10	11	12	13	14	18
16	17	18	19	20	21	22
23	24	25	26	27	28	29
30	31					

June

Sunday	Monday	Tuesday	Wednesday	Thursday	Friday	Saturday
		1	2	3	4	5
6	7	8	9	10	11	12
13	14	15	16	17	18	19
20	21	22	23	24	25	26
27	28	29	30			

July

Sunday

Monday

Tuesday

Wednesday

Thursday

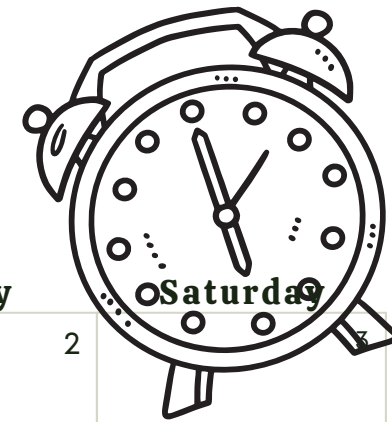
Friday

Saturday

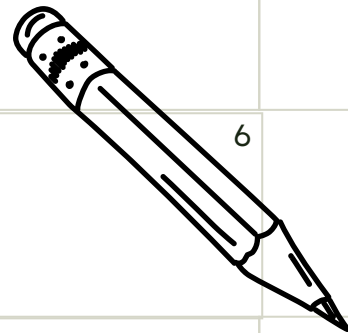
				1	2	3
4	5	6	7	8	9	10
11			14	15	16	
18		20	21		23	
28			28			

The collage features a central globe on a stand. To its left is a magnifying glass and a green protractor. Below the globe is a red alarm clock, a yellow pencil, and a green notebook. To the right of the globe is a red ruler. Further right is a stack of books with spines labeled 'GEOMETRY', 'ART', 'HISTORY', 'LITERATURE', 'SCIENCE', and 'MATH'. Below the books is a green chalkboard. To the right of the chalkboard is a yellow backpack. At the top right is an artist's palette with various colored dots and a paintbrush. The background is a grid with numbers 1 through 31.

Student Calendar August 2024



Monday	Tuesday	Wednesday	Thursday	Friday	Saturday
			1	2	
4	5	6	7	8	9
11	12	13	14	15	16
18	19	20	21	22	23
25	26	27	28	29	30
					31



Meet & Greet
PK at 12pm
Kg at 1pm
Gr.6 at 2pm



First Day
of School

WELCOME
BACK
STUDENTS

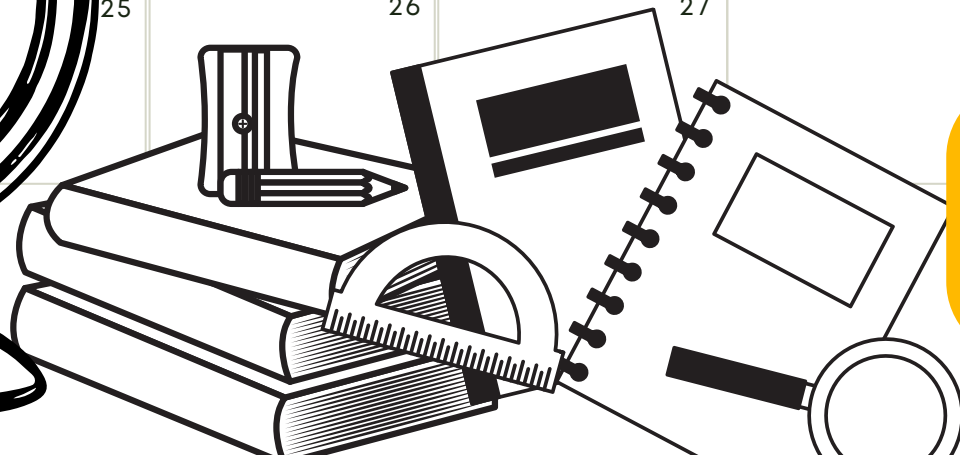
Student Discipline
Assemblies
Gr. 8 at 8:45am
Gr. 7 at 9:35 am
Gr. 6 at 2:00 pm

Student Discipline
Assemblies
Gr. 5 at 8:45am
Gr. 4 at 9:35 am
Gr. 3 at 2:00 pm

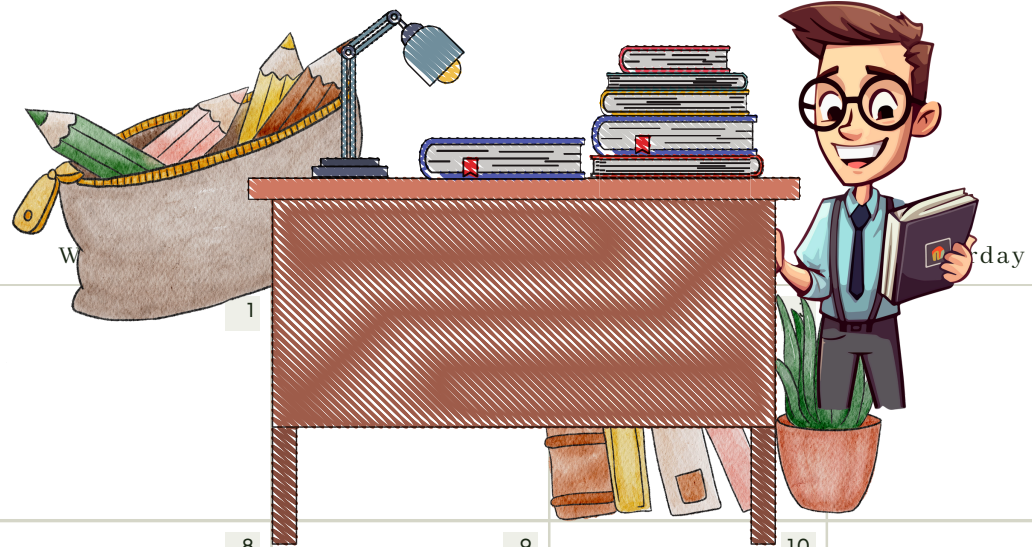
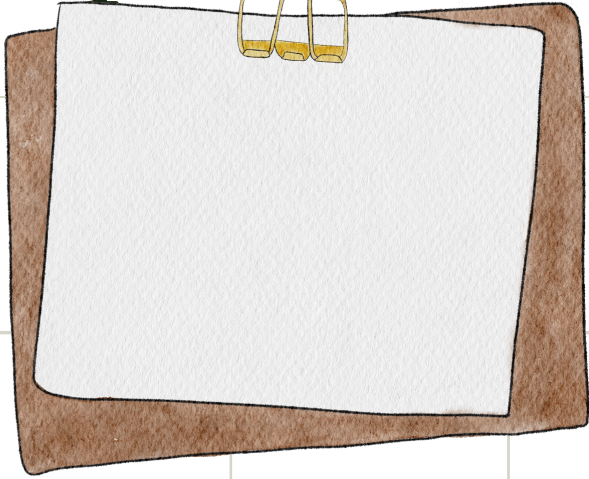
Device Distribution 8/20-21

Student Discipline
Assemblies
Gr. 1 at 8:45am
Gr. Kg at 9:35 am
Gr. 2 at 2:00 pm

Looking forward to September:
9/2: Labor Day, No School
9/16-20: Start with Hello Week
9/18: Volunteer Orientation at 9:00am
9:20: Interim Progress Reports sent home
9/24: School pictures



September



Tuesday

W

Friday

			1			4
		7	8	9	10	11
12	13	14	15	16	17	18
19	20	21	22	23	24	25
26	27	28	29	30		

October

Sunday	Monday	Tuesday	Wednesday	Thursday	Friday	Saturday
					1	2
3	4	5	6	7	8	9
10	11	12	13	14	15	16
17	18	19	20	21	22	23
24	25	26	27	28	29	30
31						

November

Sunday	Monday	Tuesday	Wednesday	Thursday	Friday	Saturday
	1	2	3	4	5	6
7	8	9	10	11	12	13
14	15	16	17	18	19	20
21	22	23	24	25	26	27
28	29	30				

December

Sunday	Monday	Tuesday	Wednesday	Thursday	Friday	Saturday
			1	2	3	4
5	6	7	8	9	10	11
12	13	14	15	16	17	18
19	20	21	22	23	24	25
26	27	28	29	30	31	